

30

Celebrating 30 Years

Livingston County Water & Sewer Authority

1995 - 2025

2025 Annual Report

Providing high quality, environmentally sound, efficient, reliable, and affordable water and sewer services to the people who live, work, and visit Livingston County.

Letter from the Chairman

As the Livingston County Water and Sewer Authority marked its 30-year anniversary, the Board of Directors is proud to reflect on three decades of service dedicated to protecting public health and supporting the communities of Livingston County.

Established in 1995 through special legislation of the New York State Legislature, the Authority was created to provide coordinated, reliable water and wastewater services across the County. What began as a newly formed public benefit corporation has grown into a complex utility system that plans, operates, and maintains critical infrastructure essential to the health, environment, and economic vitality of our communities.

The Authority's transformation over the past three decades reflects not only physical expansion, but also a commitment to responsible governance, financial stewardship, and long-term planning. The Board has worked closely with staff, municipal partners, and state and federal agencies to pursue capital improvements, regional solutions, and operational efficiencies that benefit both current customers and future generations. Through these partnerships, the Authority has remained focused on sustainability, resilience, and service reliability.

As we commemorate this milestone, we also look ahead. The challenges facing water and sewer utilities continue to evolve, from infrastructure renewal and regulatory requirements, to climate resilience and long-term water supply planning. The Board remains committed to thoughtful leadership and strategic investment that will position the Authority to meet these challenges while maintaining affordability and service excellence.

On behalf of the Board of Directors, we extend our sincere appreciation to the Authority's dedicated employees, municipal partners, regulators, and customers. Your trust and collaboration have been essential to the Authority's success over the past 30 years. We are proud of what has been accomplished and confident in the Authority's ability to continue serving Livingston County with integrity, reliability, and stewardship for decades to come.

Warm regards,
Mark McKeown
Chairman



About Us

The Authority is governed by a Board consisting of seven members, who are residents of Livingston County and are appointed by the County Board of Supervisors. These members are civic-minded individuals, with diverse backgrounds, who volunteer their time to the organization. Members are appointed to three-year terms. The Authority has an overall staff of 20 full-time employees.

The Authority's primary responsibilities are to construct, improve, maintain, develop, expand and rehabilitate water and sewerage facilities. The Authority currently operates and maintains: three wastewater treatment plants, approximately 80 miles of sanitary sewer collection and conveyance piping, and 45 sewage lift stations; one water treatment facility, approximately 130 miles of water distribution and transmission piping, 13 water storage tanks, 4 water pump stations, and 9 re-chlorination stations.

The Authority currently provides services to approximately 7,000 water and sewer accounts. The Authority's customers are located within the Village of Livonia and portions of the Towns of Avon, Caledonia, Conesus, Geneseo, Groveland, Leicester, Livonia, Lima, Mt. Morris, Sparta and Springwater.

The Authority is also responsible for the operations and maintenance of the flood gates in Conesus Creek at the outlet of Conesus Lake. This is accomplished through an agreement between the Authority and the Conesus Lake Compact (Towns of Conesus, Geneseo, Groveland, and Livonia).



\$30M

Since 2017 LCWSA has received \$30,100,000 in grant funding from seven different state and federal agencies.

\$72M

Between 2019 and 2028, LCWSA will have completed over \$72 million of capital improvements to existing and new water and sewer systems.

38M

Over 38 million gallons of wastewater is treated per month by LCWSA's three wastewater treatment facilities.

305M

Last year LCWSA delivered over 305 million gallons of safe drinking water to Livingston County residents. This is equivalent to filling over 460 Olympic sized swimming pools.

A Year in Review



Springwater Water & Sewer Systems

In January LCWSA assumed operational responsibility for the Town of Springwater water and sewer systems which includes a water treatment facility and wastewater treatment plant.

Shelly Rd. Water Storage Tank

Construction for the Shelly Rd. water storage tank began in 2025. The 2-million-gallon water tank is expected to be online in late 2026 and is part of a \$9.25M capital improvement plan to the LCWSA water system to improve water system quality and reliability. LCWSA received \$3M in grant funding for the project.

Conesus Lake Pump Station Project

The Conesus Lake PS project started in 2025 which includes replacing and upgrading all 26 pump stations, controls and SCADA around Conesus Lake. Total project costs is \$8.75M, and LCWSA has received \$3.75M in grant funding and interest-free financing for the project. The project is expected to be completed by fall 2026.

SCADA Upgrades

SCADA upgrades for the year include improvements at the Lakeville WWTP to connect the compactor, grit classifier, UV treatment and intermediate pumps to the plants SCADA system. In addition, the Springwater water treatment facility and water storage tank were also connected to the SCADA system.

Camp Run Collection System Study

The Camp Run section of the sanitary sewer system has experienced several overflows over the years, with the most recent in 2014, 2016, 2019, and 2021. LCWSA received grant funding to study the causes of overflow. The study identified additional inflow and infiltration sewer improvements needed at the southern part of Conesus Lake. In total, estimated constructions costs of these improvements are \$1.2M.

Regional Water Supply Project

In February 2022, the Livingston County Board of Supervisors authorized the Authority to develop a water supply project to benefit the communities impacted by the AkzoNobel salt mine collapse. These municipalities are primarily the Towns of Leicester and York and secondarily the Towns of Geneseo, Mt. Morris and Avon.

As a result, the Authority proposed a project to achieve the County's interest in providing enhanced public drinking water infrastructure for the Towns of Leicester, as well as supporting regional interests of providing greater access to affordable safe drinking water for multiple municipalities including the Towns of Mt. Morris, York, Lima, Avon and the Villages of Leicester, Mt. Morris and Avon.

Throughout 2023 and 2024, the Authority worked with its municipal partners to finalize the project scope, which included improved pump stations, the installation of approximately 25 miles of new transmission and distribution piping, and a new water storage tank. Additionally, the project provides for improved interconnections between existing Authority water distribution system and multiple partnering agencies, including the NYS Department of Parks, Recreation and Historic Preservation, for Letchworth State Park.

In September 2024, the Authority was awarded a \$1,000,000 grant for the project from the New York State Local Government Efficiency grant program, through the New York State Department of State.

In November 2024, the Authority was awarded a \$14,320,000 grant for the project from the New York State Environmental Facilities Corporation Intermunicipal Grant program.

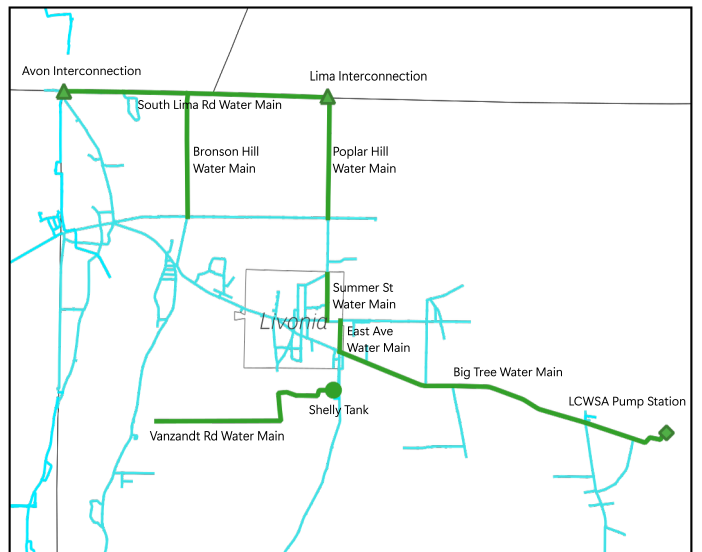
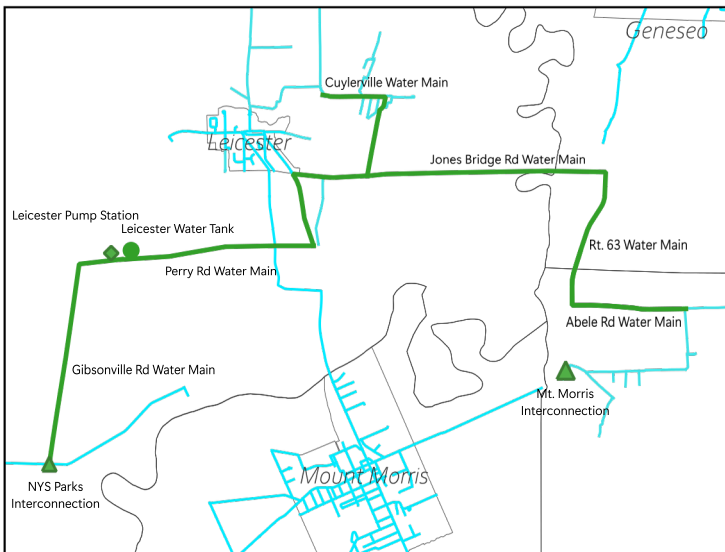
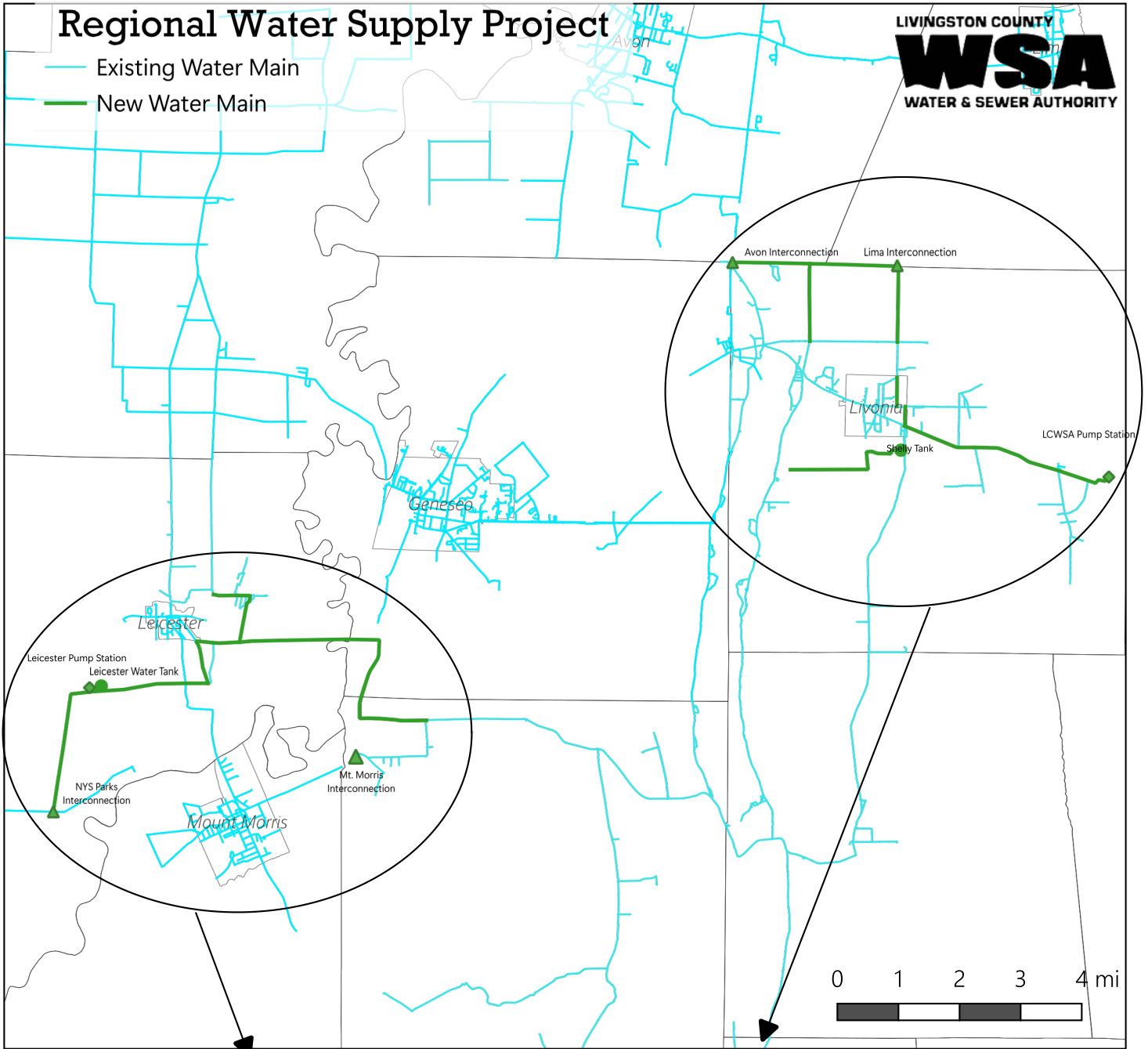
In July 2025, the Authority was awarded a \$1,000,000 grant for the project from the Northern Border Regional Commission grant program, a Federal-State partnership for economic and community development in northern Maine, New Hampshire, Vermont, and New York.

The most recent updates to the project, include transmission main routes that provide public water to households in the Town of Leicester that have been negatively impacted by the salt mine collapse and new interconnections to partnering municipalities, including the ability to serve all of the Impacted Communities (Towns of Avon, Geneseo, Mt. Morris, Leicester and York) with a new independent water source. Total project costs are estimated to be \$35,800,000.

The project is currently under design and construction is expected to start in 2027.

Regional Water Supply Project

- Existing Water Main
- New Water Main



2026 Projects



Regional Supply Water Project

The project is intended to achieve the County's interest of providing enhanced public drinking water infrastructure for the Town of Leicester, as well as supporting regional interests of providing greater access to affordable safe drinking water for all participating municipalities. The funding sources include \$14.3M IMG program, \$5.4M Akzo Funding, \$1M LGE program and \$1M NBRC program. 2026 will include finalizing water supply and related agreements with municipal partners and design of the project.

Conesus Lake Pump Station Project

The Authority has been awarded \$1.75M of WIIA grant funding and \$2.5M of BIL grant funding to replace 26 pump stations around Conesus Lake and make needed SCADA upgrades. Total project cost is estimated to be \$8.75M. The project is currently under construction and is expected to be completed by the end of 2026.

Water System Improvements

Remaining system wide water improvements include: construction of new 2-million gallon Shelly Rd. water tank and SCADA upgrades. Total project cost is \$9.75M; \$3M grant funding from WIIA. The water storage tank is currently under construction and is expected to be completed by the end of 2026.

Hemlock Pump Station Improvement Project

The Town of Livonia has been awarded \$1.5M of CDBG grant funding for the replacement and improve the 5 pump stations in the Hemlock Sewer District. These improvements include pumps, controllers, SCADA replacements and various other upgrades to improve worker safety. Total project cost is estimated to be \$1.5M and the project is expected to be completed in 2027.

2026 Projects



Water District Expansion

Currently two water districts are funded, and under design or construction. Groveland WD#1 includes the installation of 80,000 lf of water main and is expected to be completed within 2026. Lima WD#5 includes the installation of over 86,000 lf of water main is expected to start by 2027. LCWSA will be operating both districts once completed.

Springwater WWTP Improvements

Over the past year LCWSA has assumed operational responsibility for the facility through a long-term lease. In addition, the Authority has agreed to assist the Town with managing the WWTP improvement project. LCWSA will assist the Town in applying for additional funding to make the project financially feasible.

Non-Revenue Water Program

Currently LCWSA has limited systems in place to monitor water loss. Developing a more comprehensive water loss management strategy will assist in reducing the amount of revenue lost by specifically targeting water leakage, carbon emission reduction and infrastructure weaknesses. LCWSA received funding from New York State to establish the Livingston/Wyoming Water Loss Pilot Program.

Groveland Correctional WWTP

In 2025 LCWSA started the application process to review the opportunity to assume the Groveland Correctional WWTP from New York State. With the acquisition of the WWTP, LCWSA could decommission its small Groveland Station WWTP and combine sewer flows. A survey of the property is required to start the review process, followed by negotiations with NYS DOCCS.

2026 Projects



Lakeville WWTP Upgrades

Currently the Lakeville WWTP compactor, grit classifier, UV treatment facility and intermediate pumps are not connected to the SCADA system. There is no alarming or remote monitoring of these assets. Installing alarming and remote monitoring capabilities within our existing SCADA system will provide optimal oversight for operation at the Lakeville WWTP. Also, in 2026 there are several planned improvements for the facility which include: a sludge pump replacement, interior and exterior painting, clarifier valve replacements, bio-tower electrical plug installation and davit crane installation.

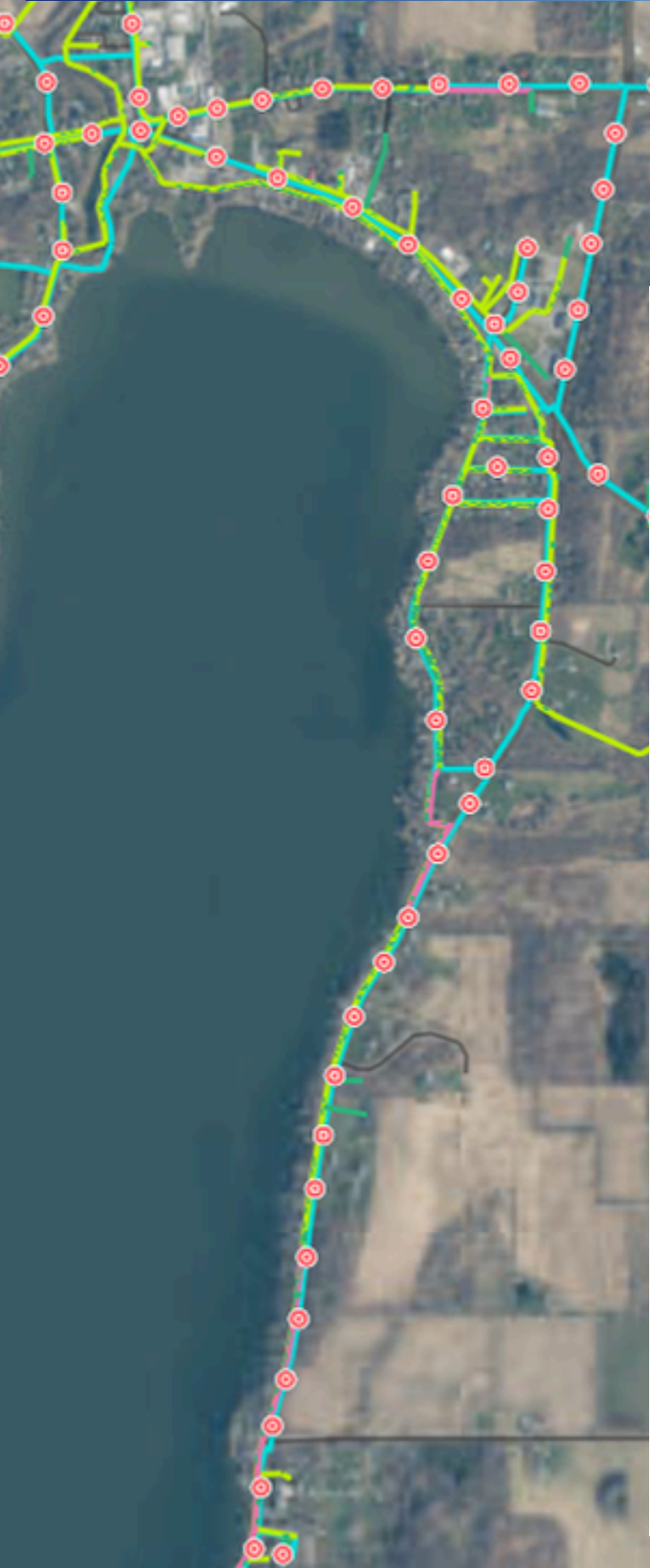
Conesus Creek Gauge

Currently the Lakeville WWTP SPDES permit requires the Authority to maintain 10 cubic feet per second (cfs) of flow through the Conesus Creek. This is monitored by a USGS Station and costs approximately \$26,000 per year to operate through an agreement with USGS. After further evaluation in partnership with the Conesus Lake Association, it was determined that a separate flow monitor can be installed along the creek that can result the same creek flow as the USGS station. This alternative will provide the Compact of Towns with annual savings to be redirected towards evaluating the Conesus Flood Gates.

Continue Infiltration & Inflow (I/I) Program

Over the past two years LCWSA has inspected/confirmed over 2,500 sewer customers are not connected to the sanitary sewer system. The Authority has identified 105 violations and worked with residential and commercial property owners to disconnect over 95 sump pump connections from the sanitary sewer system. 2026 will focus on completing inspections for the remaining customers within the Lakeville service area and initiating inspections for sewer customers in the Towns of Avon and Springwater.

2026 Projects



Wastewater Treatment Plant Data Analytics

The 2026 budget included the installation of new pH and oxidation reduction potential probes at the Lakeville WWTP and dissolved oxygen probe at the Groveland WWTP. These probes will provide operators with real time insight into the chemical characteristics of the wastewater at each facility.

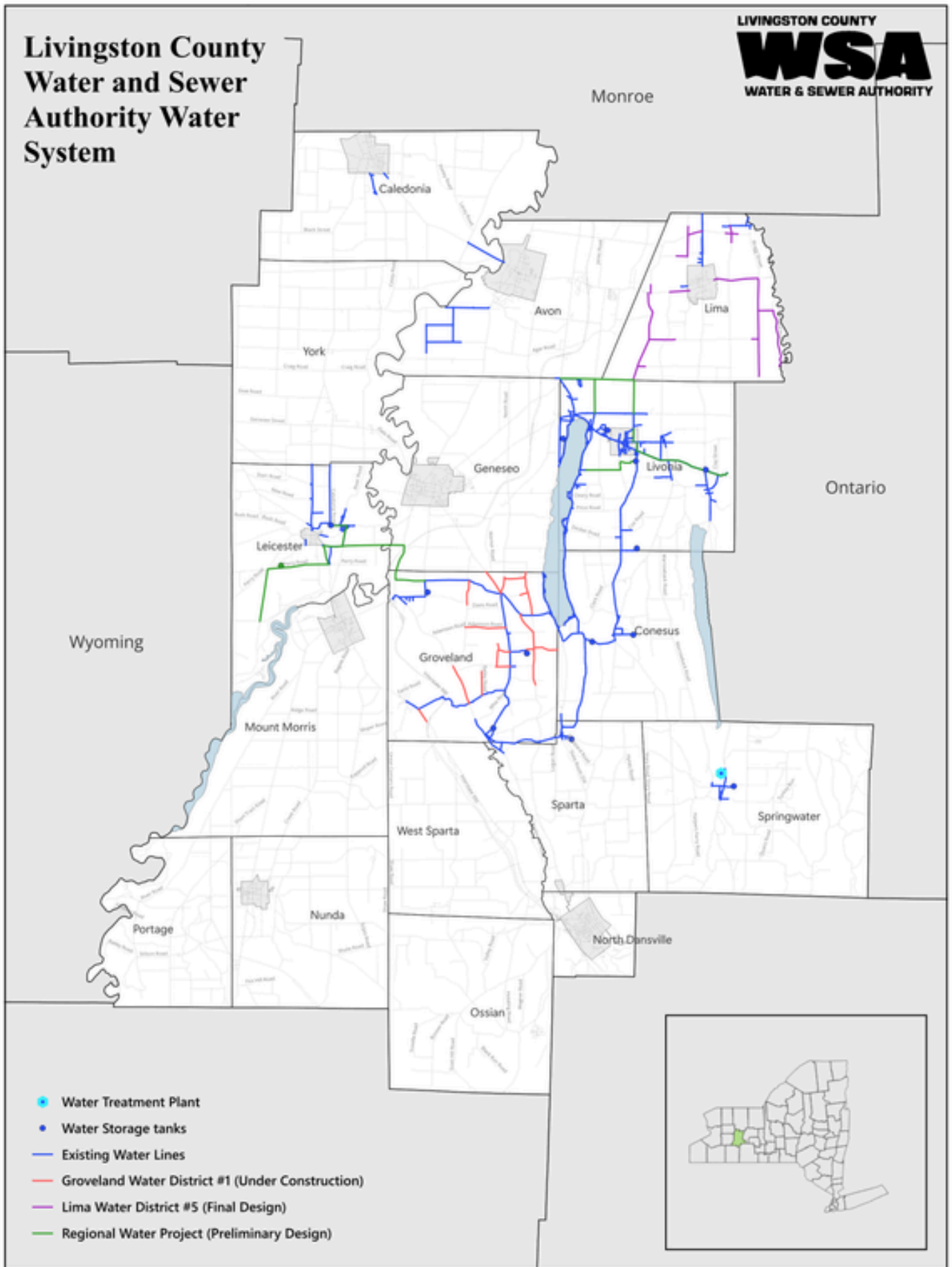
GIS Expansion

To date over 40,000 assets have been located and entered into the GIS software. In addition, the software is used daily for workorders, material inventory and preventative maintenance routines. Over the next year, staff intends to expand the use of GIS software to include real-time field inspections and installations during construction of Groveland WD #1 and Lima WD#5. In addition, the Authority will assist the Village of Lima and the Village of Leicester in creating basic water and sewer infrastructure GIS layers of their systems. Lastly, GIS layers will be created for Lakeville WWTP to include plant valves and pumps.

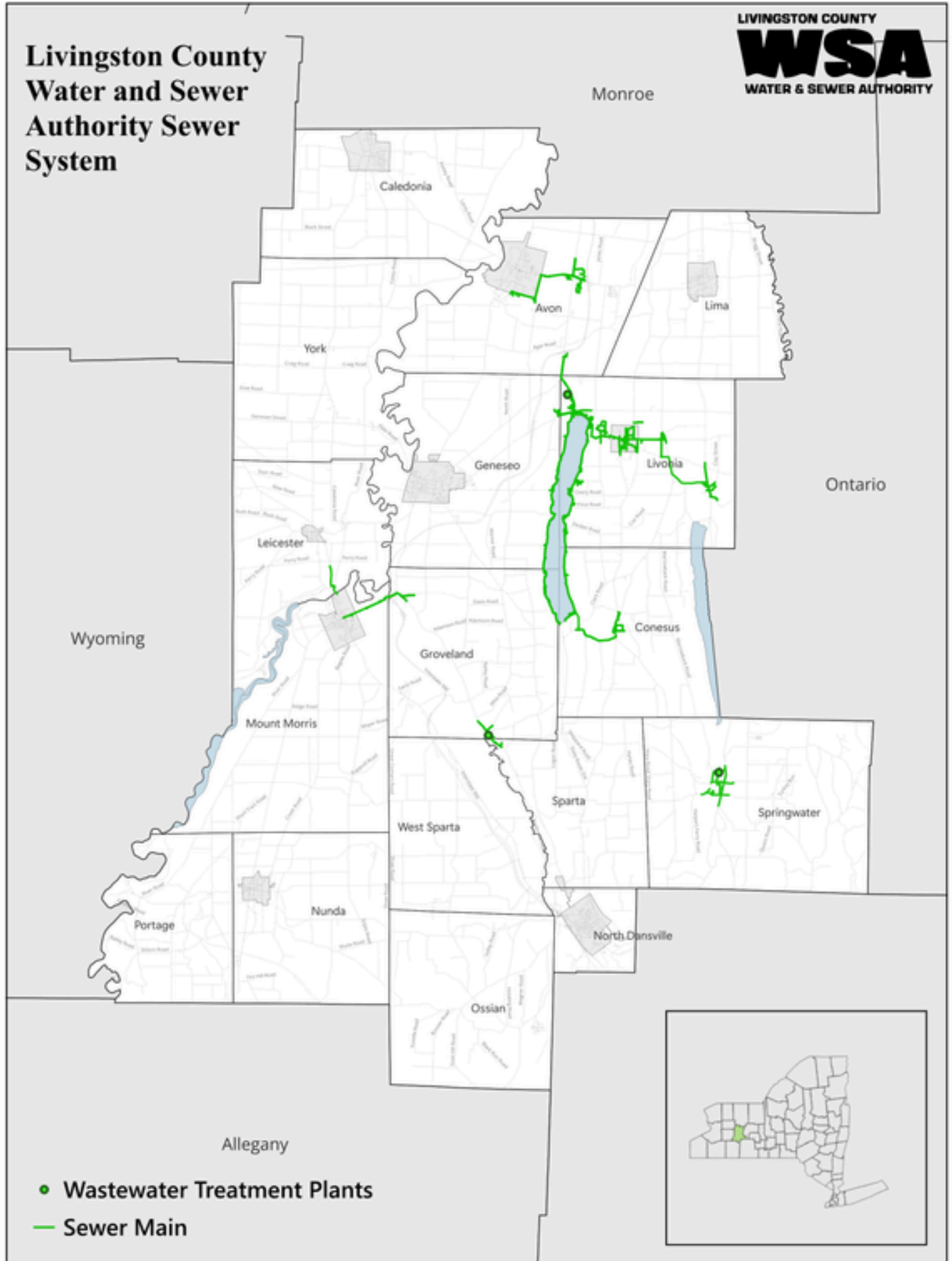
Springwater Water Meter Replacement

Currently the Town of Springwater has 157 water meters for all water customers. The current meters are 8-10 years old. These meters are read by a manual touch read process, which require additional maintenance staff to physically connect a reading device to an exterior touch pad on each customer's home/property to upload water usage data. Considering travel time, staff time to read meters manually and process billing, changing to radio read water meters in Springwater will save over 100 hours of staff time annually and decrease the probability of errors during the meter reading and billing process.

Water Service Area



Sewer Service Area



STATEMENT OF NET POSITION

December 31, 2025

<u>ASSETS AND DEFERRED OUTFLOWS OF RESOURCES:</u>	<u>2025</u>
<u>Current Assets -</u>	
Cash and cash equivalents	\$ 2,467,813
Accounts receivable (net of allowance)	2,438,380
Current portion of capital contributions receivable	58,015
Materials and supplies inventory	222,778
Prepaid items	289,682
Funds held for others	1,500
Total Current Assets	<u>\$ 5,478,168</u>
<u>Noncurrent Assets -</u>	
Restricted cash	\$ 12,699
Funds held by trustee	534,653
Capital contributions receivable, net of current portion	119,485
Total Noncurrent Assets	<u>\$ 666,837</u>
<u>Capital Assets -</u>	
Land and work in progress	\$ 5,546,623
Capital assets, net of depreciation	41,050,875
Lease assets, net of amortization	230,137
Total Capital Assets, Net	<u>\$ 46,827,635</u>
TOTAL ASSETS	<u>\$ 52,972,640</u>
<u>Deferred Outflows of Resources -</u>	
Deferred outflows of resources	\$ 860,278
TOTAL ASSETS AND DEFERRED OUTFLOW OF RESOURCES	<u>\$ 53,832,918</u>
<u>LIABILITIES, DEFERRED INFLOW OF RESOURCES AND NET POSITION:</u>	
<u>Current Liabilities -</u>	
Accounts payable	\$ 1,558,293
Accrued liabilities	14,283
Accrued interest	28,168
Funds held for others	307
Bond anticipation note	5,923,275
Retainage payable	168,727
Compensated absences	55,692
Current portion of debt	530,092
Total Current Liabilities	<u>\$ 8,278,837</u>
<u>Noncurrent Liabilities -</u>	
Bonds payable, net of current portion	\$ 10,599,822
Lease liability, net of current portion	77,502
Net pension liability	608,306
OPEB liability	942,361
Total Noncurrent Liabilities	<u>\$ 12,227,991</u>
TOTAL LIABILITIES	<u>\$ 20,506,828</u>
<u>Deferred Inflows of Resources -</u>	
Deferred inflows of resources	\$ 415,794
<u>Net Position -</u>	
Net investment in capital assets	\$ 29,528,217
Restricted	547,352
Unrestricted net position	2,834,727
Total Net Position	<u>\$ 32,910,296</u>
TOTAL LIABILITIES, DEFERRED INFLOW OF RESOURCES AND NET POSITION	<u>\$ 53,832,918</u>

**LIVINGSTON COUNTY WATER & SEWER AUTHORITY
LIVINGSTON COUNTY, NEW YORK**

**STATEMENT OF REVENUES, EXPENSES AND CHANGES IN
NET POSITION**

For Year Ended December 31, 2025

<u>OPERATING REVENUES:</u>	<u>2025</u>
Service fees	\$ 5,449,101
Operation and maintenance service fees	23,460
Permit fees	160,007
Other operating income	226,879
TOTAL OPERATING REVENUES	<u>\$ 5,859,447</u>
<u>OPERATING EXPENSES:</u>	
Wages, salaries, and benefits	\$ 1,345,807
Professional services	583,342
Utilities	419,321
Vehicle expense	76,700
Purchased water and sewer	841,818
Equipment maintenance	103,822
Building maintenance	742,540
Other	118,724
Depreciation and amortization	1,514,076
TOTAL OPERATING EXPENSES	<u>\$ 5,746,150</u>
OPERATING (LOSS) INCOME	<u>\$ 113,297</u>
<u>NONOPERATING REVENUES (EXPENSES):</u>	
Interest earnings	\$ 114,896
Interest expense	(102,353)
Debt fees	(10,724)
Grant revenue	1,997,094
TOTAL NONOPERATING REVENUES (EXPENSES)	<u>\$ 1,998,913</u>
INCOME (LOSS) BEFORE CAPITAL CONTRIBUTIONS	<u>\$ 2,112,210</u>
<u>CAPITAL CONTRIBUTIONS:</u>	
Contributed capital	\$ 201,850
TOTAL CAPITAL CONTRIBUTIONS	<u>\$ 201,850</u>
(DECREASE) INCREASE IN NET POSITION	<u>\$ 2,314,060</u>
NET POSITION - BEGINNING OF YEAR	<u>30,596,236</u>
NET POSITION - END OF YEAR	<u>\$ 32,910,296</u>

**LIVINGSTON COUNTY WATER & SEWER AUTHORITY
LIVINGSTON COUNTY, NEW YORK**

STATEMENT OF CASH FLOWS

For Year Ended December 31, 2025

<u>CASH FLOWS FROM OPERATING ACTIVITIES:</u>	<u>2025</u>
Revenues -	
Receipts from service fees	\$ 5,402,051
Receipts from permit fees	160,007
Other operating receipts	226,879
Expenses -	
Payments to vendors and suppliers for goods and services	(2,865,347)
Payments to employees for wages and benefits	(2,546,274)
Service fees remitted to other governments	(19,741)
Net Cash Provided by Operating Activities	<u>\$ 357,575</u>
<u>CASH FLOWS FROM CAPITAL AND RELATED FINANCING ACTIVITIES:</u>	
Purchases of capital assets	\$ (2,704,473)
Cash received for capital contributions	67,252
Grants received for capital assets	1,947,094
Proceeds from bond anticipation note payable	1,685,523
Repayments on bond payable	(611,351)
Interest on capital debt	(91,972)
Bond issuance cost	(10,724)
Lease principal payments	(36,751)
Net Cash Used In Capital and Related Financing Activities	<u>\$ 244,598</u>
<u>CASH FLOWS FROM INVESTING ACTIVITIES:</u>	
Interest income	\$ 96,618
Net Cash Provided By Investing Activities	<u>\$ 96,618</u>
Net (Decrease) Increase in Cash and Cash Equivalents	\$ 698,791
Cash and Cash Equivalents - Beginning of Year	<u>1,781,721</u>
Cash and Cash Equivalents - End of Year	<u>\$ 2,480,512</u>
Classified as:	
Cash and cash equivalents	\$ 2,467,813
Restricted cash and cash equivalents	12,699
Total cash and cash equivalents	<u>\$ 2,480,512</u>
<u>RECONCILIATION OF CHANGE IN NET POSITION TO NET CASH PROVIDED BY OPERATING ACTIVITIES:</u>	
Operating (loss) income	\$ 113,297
Adjustments to reconcile changes in net position to cash Provided by Activities -	
Depreciation	1,514,076
Changes in assets and liabilities -	
Accounts receivable	(70,510)
Funds held by others	(19,741)
Inventory	26,478
Prepaid expense	(66,179)
Accounts payable	(32,933)
Compensated absences	7,949
Net pension asset/(liability)	76,233
Other postemployment benefit	(974,050)
Deferred inflows	(261,621)
Deferred outflows	83,429
Other current liabilities	(38,853)
Net Cash Provided by Operating Activities	<u>\$ 357,575</u>

DEBT SCHEDULE

VII. Short-Term Debt

A. Bond Anticipation Notes

1. On November 4, 2021, the Authority issued a Bond Anticipation Note (BAN) through the Environmental Facilities Corporation (EFC) for a maximum amount of 4,000,000 for the Water System Improvements Project. This BAN included an interest free sum of 1,333,333 and a market rate sum of \$2,666,667 at a market rate of 0.33% under a NYS EFC short-term financing program, which is considered a direct borrowing. On November 20, 2025, the Authority signed an updated Project Finance Agreement which increased the borrowing through EFC to a maximum amount of \$6,750,000 for the Water System Improvements Project. This BAN now includes an interest free sum of \$2,250,000 and a market rate sum of \$4,500,000 at a market rate of 2.65%. The BAN has a maturity date of June 30, 2027. At this time, the Authority can convert the BAN to long-term financing if all conditions are met and if such financing is made available by EFC. The Authority drew down \$1,615,438 on this BAN in 2022, \$1,452,900 in 2023, \$388,851 in 2024, and \$289,827 in 2025. In addition, the first short-term principal payment of \$36,000 was made in 2024. Principal payments totaling \$128,500 were made in 2025.

2. On January 9, 2025, the Authority issued a Bond Anticipation Note (BAN) funded by the Bipartisan Infrastructure Law (BIL) through the Environmental Facilities Corporation (EFC) for a maximum amount of \$5,000,000 for the Conesus Lake Pump Station Improvements Project. This BAN includes an interest free sum of \$5,000,000 under a NYS EFC short-term financing program, which is considered a direct borrowing. The BAN has a maturity date of 1/9/2030.

The following is a summary of the changes in short-term debt as of December 31, 2025:

	<u>Original Amount</u>	<u>Maturity</u>	<u>Interest Rate</u>	<u>Balance 1/1/25</u>	<u>Additions</u>	<u>Deletions</u>	<u>Balance 12/31/25</u>
BAN-2021	\$ 1,615,438	6/30/2027	2.65%	\$ 3,421,189	\$ 289,827	\$ (128,500)	\$ 3,582,516
BAN-2025	\$ 5,000,000	1/9/2030	0.00%	-	2,340,759	-	2,340,759
Total Short-Term Debt				<u>\$ 3,421,189</u>	<u>\$ 2,630,586</u>	<u>\$ (128,500)</u>	<u>\$ 5,923,275</u>

IX. Long-Term Debt

A. EFC Revenue Bond Payable

1. On August 27, 2009, the Authority issued a \$2,921,000 Sewer Installment Bond with the NYS Environmental Facilities Corporation to fund the cost of various sewer projects. The bond has an interest rate of 4.27% and will mature on August 1, 2039.

2. On February 7, 2011, the Authority issued a \$951,750 Drinking Water Installment Bond with the NYS Environmental Facilities Corporation to fund the cost of the Groveland Station water project. The Bond has an interest rate of 0% and will mature on August 31, 2040.

3. On May 1, 2012, the Authority was a part of a \$1,322,692 offering of the NYS EFC Revenue Bonds to fund the cost of various sewer projects. The bond has an interest rate of 3.74% and will mature on May 1, 2042.

4. As of December 31, 2022, the Authority owed \$6,686,416 on the EFC BAN which funded the Lakeville Wastewater Treatment Plant upgrades. The balance was subsequently refinanced on a long-term basis. The long-term debt was issued on January 5, 2023 and is a \$7,652,105 Clean Water Installment Bond with NYS Environmental Facilities Corporation. The bond has an interest rate of 0% and will mature on January 5, 2052.

5. The \$1,705,000 System Revenue Notes were permanently financed on August 7, 2024 through the issuance of a \$1,245,000 Bond. The bond has a maturity date of August 1, 2039.

Management's Assessment of Internal Controls

The Authority has developed policies and procedures to provide reasonable assurance that assets are safeguarded from unauthorized acquisitions, use of, or disposition of assets that could have a material effect on the Authority's operations, financial statements and reports, and that the records of the Authority reflect only authorized transactions.

The Authority's system of internal controls is evaluated regularly by Authority management and administrative staff. Independent external auditors also review the internal control system of the Authority in order to determine compliance with generally accepted accounting principles and safeguards for the purpose of expressing an opinion on the financial statements.

This statement verifies that management has documented and assessed the internal control structure and procedures of the Livingston County Water & Sewer Authority for the year ending December 31, 2025. This assessment found the Authority's internal controls to be adequate, and to the extent that deficiencies were identified, the Authority has developed corrective action plans to reduce any corresponding risk.

Person & Real Property Transactions

In 2025, the Authority disposed of the following personal property (equipment, vehicles, and materials) with an estimated fair market value in excess of \$5,000:

- Kubota RTV-X1100C 4WD Diesel Utility Vehicle; A5KC2GDBVN072343

In 2025, the Authority did not acquire or dispose of real property with a fair market value in excess of \$15,000.

Real Property Schedule

YEAR ENDING DECEMBER 31, 2025

Property Use	Municipality	Address	Tax ID	Acreage
Sewer Plant	Lakeville	1997 D'Angelo Dr	65.-1-84.1	18.56 acres
Sewer Plant	Groveland	7458 Groveland Station Rd	135.-1-25.2	57 x 259
Water Tank	Mt Morris	3746 East Groveland	98.-1-12.2	180 x 200
Water Tank	Groveland	7305 Groveland Hill Rd	136.-1-3	75 x 75
Water Tank	Groveland	7161 Groveland Hill Rd	127.-1-20	75 x 75
Water Tank	Conesus	6022 Sliker Hill	119.-1-20.12	280 x 170
Water Tank	Livonia	Shelly Road	110.-1-16.123	.5 acres
Water Pump Station	Groveland	5500 Maple Beach	109.-1-38.12	.26 acre
Water Pump Station	Groveland	5168 Dennison Rd	118.-1-10.2	1.80 acres
Sewer Pump Station	Livonia	2851 Lakeville Rd	65.-1-6.113	30 x 60
Sewer Pump Station	Groveland	5650 S Cove Ln	1W 110.69-1-9	30x40
Sewer Pump Station	Groveland	6019 W Lake Rd	2W 109.60-1-7	30 x 60
Sewer Pump Station	Groveland	5945 Calvin Lane	3W 109.52-1-7	50 x 16
Sewer Pump Station	Groveland	5883 W Lake Rd	4W 109.44-1-13.2	25 x 50
Sewer Pump Station	Groveland	4257 Sutton Point North	5W 100.83-1-32	30 x 80
Sewer Pump Station	Groveland	5556 Cottonwood Dr	6W 100.59-1-11.2	66 x 33
Sewer Pump Station	Groveland	5341 West Lake Rd	7W 100.35-1-13	55 x 30
Sewer Pump Station	Geneseo	5113 West Lake Rd	8W 91.68-1-17	39 x 33
Sewer Pump Station	Geneseo	5346 N Point Dr	9W 91.36-1-20	33 x 33
Sewer Pump Station	Geneseo	4637 Westwood Dr	10W 82.76-1-9	47 x 44
Sewer Pump Station	Geneseo	4257 West Lake Rd	12W 83.37-1-16.2	35 x 63
Sewer Pump Station	Livonia	4007 Graywood Ctr	13W 74.69-1-3	31 x 30
Sewer Pump Station	Livonia	3876 Grayshores Rd	14W no tax ID	
Sewer Pump Station	Conesus	5756 Mariners Dr	1E 110.55-1-60	35 x 42
Sewer Pump Station	Conesus	5926 E Lake Rd	2E 110.39-1-12.1	30 x 27
Sewer Pump Station	Conesus	5650 E Lake Rd	3E 101.-1-96.3	30 x 25
Sewer Pump Station	Conesus	5506 E Lake Rd	4E 101.46-1-8	7 x 31
Sewer Pump Station	Conesus	5289 E Lake Rd	5E 92.78-1-17	35 x 35
Sewer Pump Station	Livonia	5158 E Lake Rd	6E 92.62-2-2	50 x 24
Sewer Pump Station	Livonia	5765 McPherson's Pt	7E 92.38-2-13	41 x 42
Sewer Pump Station	Livonia	4820 E Lake Rd	8E 83.79-2-1.2	33 x 25
Sewer Pump Station	Livonia	5719 Old Orchard Pt	9E 83.54-2-28	25 x 45
Sewer Pump Station	Livonia	4440 E Lake Rd	10E 83.31-2-13	48 x 12
Sewer Pump Station	Livonia	4088 E Lake Rd	11E 74.48-1-7.2	33 x 32
Sewer Pump Station	Lakeville	3562 Camp Run	12E 65.81-1-36	10 x 50
Sewer Pump Station	Mt Morris	3098 Mt Morris -Geneseo Rd	106.-1-16.2	73 x 150
Sewer Pump Station	Mt Morris	3229 Mt Morris - Geneseo Rd	98.-2-1.12	329 x 138
Sewer Pump Station	Groveland	7546 Groveland Station Rd	136.17-1-11.2	40 x 60
Sewer Pump Station	Conesus	6170 East Lake Rd	110.-1-20.117	40 x 40
Sewer Pump Station	Conesus	6265 Mill Street	110.-1-16.123	32 x 59
Sewer Pump Station	Conesus	6295 North Street	111.17-1-11.2	50 x 50
Sewer Pump Station	Conesus	6042 South Livonia Rd	111.-1-76.2	
Driveway	Livonia	Longview Blvd.	74.-1-5.215	50 x 680



Livingston County Water & Sewer Authority

1997 D'Angelo Drive
P.O. Box 396
Lakeville, NY 14480
Phone: (585) 346-3523
Fax: (585) 346-0954
www.lcwsa.us