

2024 ANNUAL REPORT

Livingston County Water & Sewer Authority



585.346.3523 

www.lcwsa.us 

apply@lcwsa.us 

1997 D'Angelo Dr., Lakeville, NY 

About Us

The Livingston County Water & Sewer Authority (the Authority) is a public benefit corporation that was established in 1995 by an act of the State Legislature. As outlined in its enabling legislation, the Authority was created ***“for the benefit of the people of the county and the state, for the improvement of their health, welfare and prosperity, and that such purposes are public purposes, and that the authority is and will be performing an essential governmental function in the exercise of the powers conferred upon it”***.



The Authority’s primary responsibilities are to construct, improve, maintain, develop, expand and rehabilitate water and sewerage facilities. The Authority currently operates and maintains: three wastewater treatment plants, approximately 54 miles of sanitary sewer collection and conveyance piping, and 45 sewage lift stations; approximately 140 miles of water distribution and transmission piping, 12 water storage tanks, 4 water pump stations, and 7 re-chlorination stations.

The Authority currently provides services to approximately 7,000 water and sewer accounts. The Authority’s customers are located within the Village of Livonia and portions of the Towns of Avon, Caledonia, Conesus, Geneseo, Groveland, Leicester, Livonia, Lima, Mt. Morris, Sparta and Springwater.

Our Mission

To provide high quality, environmentally sound, efficient, reliable, and affordable water and sewer services to the people who live, work, and visit Livingston County.

Our Story

The Authority is governed by a Board consisting of seven members, who are residents of Livingston County and are appointed by the County Board of Supervisors. These members are civic-minded individuals, with diverse backgrounds, who volunteer their time to the organization. Members are appointed to three-year terms.

The Authority has an overall staff of 18 full-time employees, which includes: the Executive and Deputy Director, Director of Operations, Wastewater Treatment Plant Manager, four Office Staff, six Water/Wastewater Maintenance Persons and four Wastewater Treatment Plant Operators.

The Authority's Wastewater Treatment Plant Manager and Operators are responsible for the operation and maintenance of the Authority's three wastewater treatment plants, Lakeville Wastewater Treatment Plant (SPDES NY 0032328), Groveland Station Wastewater Treatment Plant (SPDES NY 0247227) and Springwater Wastewater Treatment Plant (SPDES NY0246450).



A Year in Review

PROJECTS

DETAILS

Billing/Accounting Software Implementation

Frey software was purchased to replace the prior billing, budgeting and accounting softwares. The new software was successfully implemented January 1st and the first billing cycle was completed on August 1st.

Infiltration and Inflow Program

Over the past year the Authority continued with residential and commercial inspections and corrective actions for non-compliant property owners. As a result of this effort 80 sump pumps were disconnected from the sanitary sewer system, contributing to the Lakeville WWTP experiencing record low flows over the past three years.

Space Needs Assessment

The Authority completed a space needs evaluation for the next 25 years. The assessment evaluated current and future space needs based on prospective growth in operations. Next steps will include acquiring the needed funding to support the construction of a new administrative and garage facility.

GIS Program

Along with digital mapping, the Ziptility software provides interconnected workorder and inventory systems. In 2024 all three modules were implemented providing staff optimal ability to manage and track work orders in the field as well as strategically assign work based on resource availability and physical location. In addition, the inventory system was linked to the workorder process allowing staff to track all inventory used for each task.

Fire Hydrant Program

The Authority has 935 fire hydrants throughout its distribution systems composed of various models. Regular maintenance, repairs and replacement is critical to ensure hydrants are kept in good working order. In 2024 421 hydrants were painted, and 5 were repaired/replaced.

421

Fire hydrants painted

37,492

Assets added to GIS

22.5M

Gallon of water distributed to residents monthly

\$16.32M

Grant funding received

Regional Water Supply Project

In February 2022 the Livingston County Board of Supervisors authorized the Authority to develop a water supply project to benefit the communities impacted by the AkzoNobel salt mine collapse. These municipalities are primarily the Towns of Leicester and York and secondarily the Towns of Geneseo, Mt. Morris and Avon. Over the next year the Authority, and its engineering consultants worked diligently on the planning and development of a regional water supply project, the Leicester/York Regional Water Supply Expansion Project.

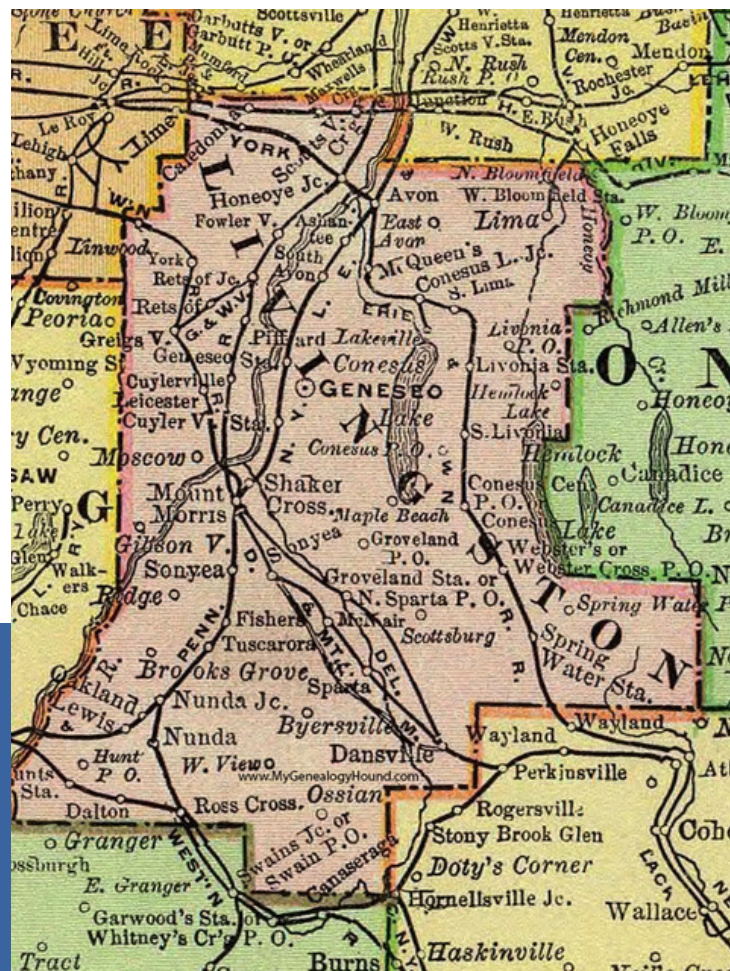
In 2024 the Authority received \$15,320,000 in grant funding for the project. In addition, Livingston County is contributing \$13,700,000 towards the project from Akzo Settlement funds.

Throughout the past year the Authority has worked collaboratively with Livingston County and the impacted communities to finalize the project scope, develop terms and conditions for

intermunicipal agreements and included Letchworth State Park as a project partner.

The project now includes the installation of over 25 miles of new transmission and distribution piping, a new water tank in Leicester, TTHM removal systems in the Leicester and Geneseo water tanks, upgrades to the Village of Geneseo water treatment plant, and improved interconnections between the Authority, and several municipal partners.

Currently intermunicipal agreements are in the process of being reviewed and approved and it is anticipated that the Regional Water Supply Project will begin design later in 2025.



2025 Projects



Regional Supply Water Expansion Project

The project is intended to achieve the County's interest of providing enhanced public drinking water infrastructure for the Town of Leicester, as well as supporting regional interests of providing greater access to affordable safe drinking water for all participating municipalities. The funding sources include \$14.3M IMG program, \$13.7M Akzo Funding and \$1M LGE program. 2025 will include finalizing water supply and related agreements with municipal partners, design engineer selection and design of the project.

Conesus Lake Pump Station Project

The Authority has been awarded \$1.75M of WIIA grant funding and \$2.5M of BIL grant funding to replace 26 pump stations around Conesus Lake and make needed SCADA upgrades. Total project cost is estimated to be \$8.75M. 2025 will include design, bid and build of the project to be completed by the end of 2026.

Groveland Water District #1

In 2021 the Town of Groveland created Water District #1 and received funding from USDA to install approximately 80,000 linear feet of 4-inch, 6-inch, 8-inch, and 12-inch water main to provide potable water and fire service. In 2025 the Authority will work with Town to monitor water line installation and upon project completion accept transfer to the Authority for operations.

SCADA Upgrades

Currently the Lakeville WWTP compactor, grit classifier, UV facility, intermediate pumps and Springwater WTP are not connected to the SCADA system. There is no alarming or remoting monitoring of these assets. 2025 will include installing alarming and remote monitoring capabilities within our existing SCADA system to provide optimal oversight for operation of these assets.

2025 Projects

Springwater Water and Sewer System

In January 2025 the Authority assumed operational control and responsibility over the Town of Springwater water and sewer systems. Becoming more familiar and proficient with both systems as part of establishing a baseline of operations will be a priority for all maintenance and treatment staff over the next 12 months. 2025 will include developing an internal plan for maintenance and treatment staff to become more familiar with the Springwater water and sewer systems.

Develop Leakage Management Strategy

Currently LCWSA has limited systems in place to monitor water loss. Developing a more comprehensive water loss management strategy will assist in reducing the amount of revenue lost that specifically targets water leakage, carbon emission reduction and identify infrastructure weaknesses. 2025 will include establishing a water loss strategy for tracking water loss and making improvements to LCWSA water systems.

Camp Run Collection System Study

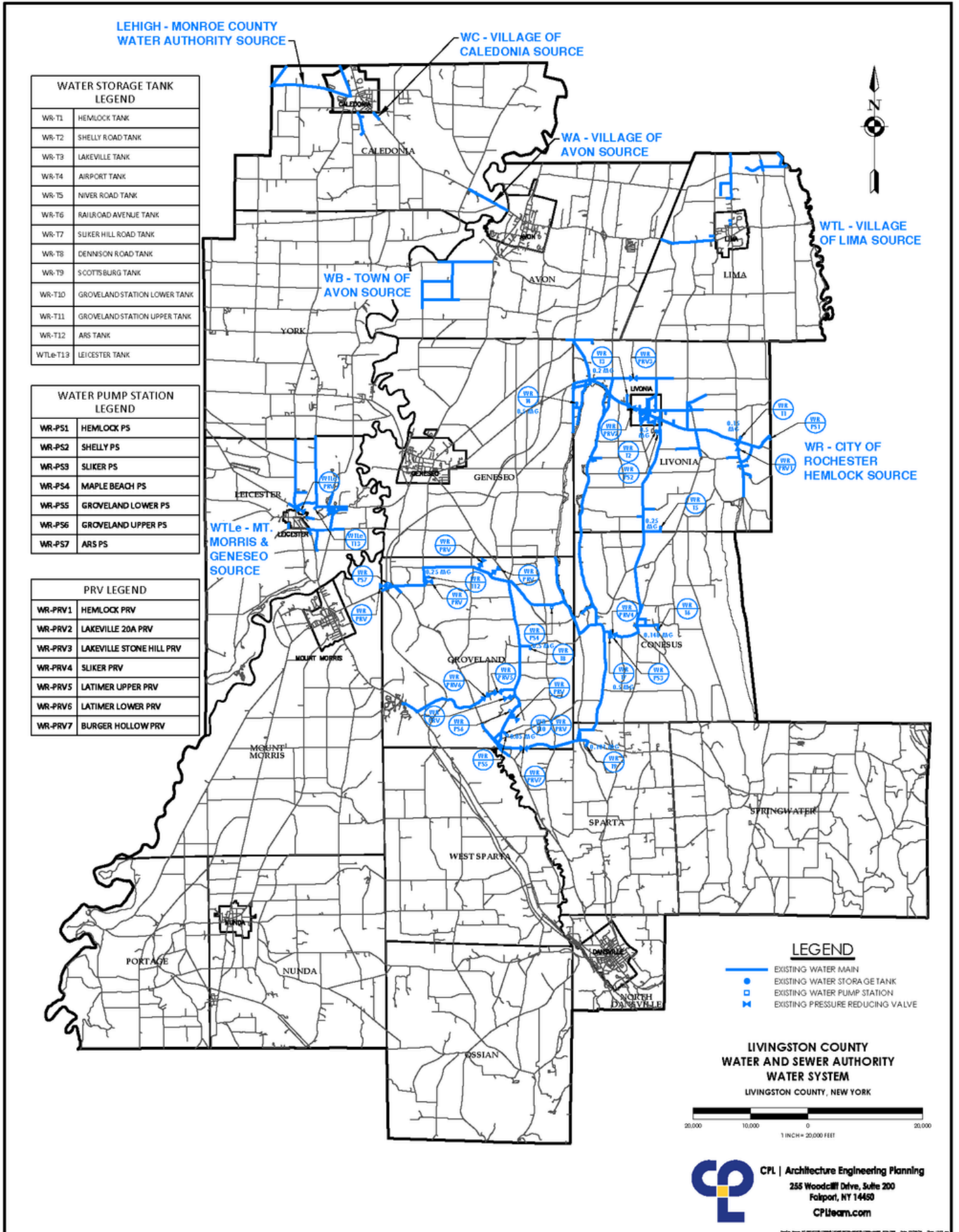
The Camp Run section of the sanitary sewer system has experienced several overflows over the years, with the most recent in 2014, 2016, 2019, and 2021. This project will study the causes of the overflows, include field work to obtain accurate system information and provide recommendation to correct the issue.

Train Staff/Succession Planning

In 2025 the Authority will be hiring several new staff members, including new supervisory staff. This year will include training new staff to become familiar with existing equipment, water and sewer assets, SCADA system, Ziptility and preventative maintenance schedules.



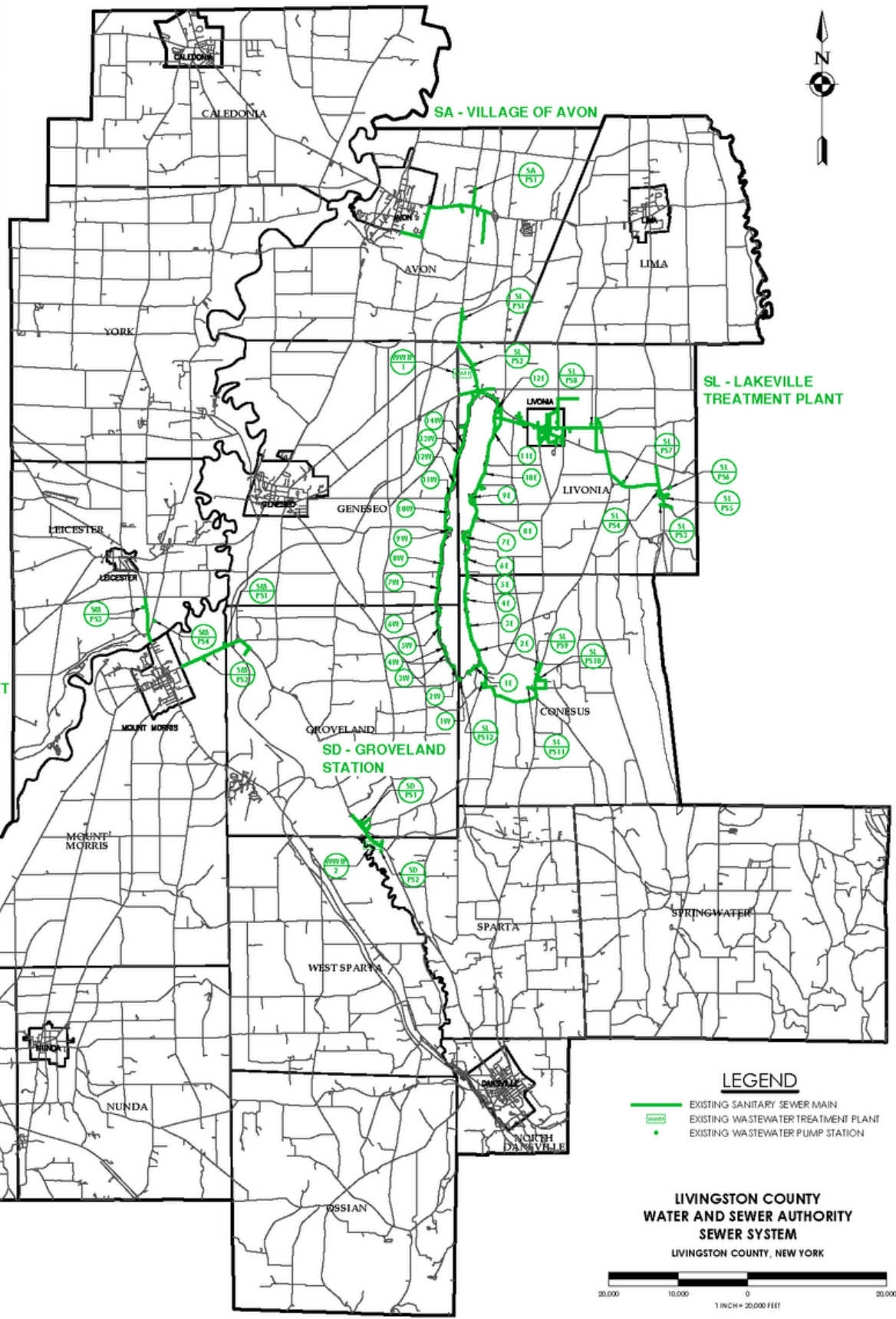
Water Service Area



Sewer Service Area

WASTEWATER TREATMENT PLANT LEGEND	
WWTP-1	LAKEVILLE WWTP
WWTP-2	GROVELAND WWTP

WASTEWATER PUMP STATION LEGEND	
SA-PS1	STEELE PS
SD-PS1	GROVELAND NORTH PS
SD-PS2	GROVELAND SOUTH PS
SL-PS1E-PS12E	CLCSD E. LAKE ROAD
SL-PS1W-PS14W	CLCSD W. LAKE ROAD
SL-PS1	SLOAN PS
SL-PS2	PEASE PS
SL-PS3	MAIN STREET PS
SL-PS4	AGWAY PS
SL-PS5	PLEASANT STREET PS
SL-PS6	CLAY STREET PS
SL-PS7	ADAMS ROAD PS
SL-PS8	LIVONIA CENTER PS
SL-PS9	RICKY GREENE PS
SL-PS10	NORTH STREET PS
SL-PS11	MILL STREET PS
SL-PS12	EAST LAKE PS
SM-PS1	SHAKER FARM PS
SM-PS2	OPRIANO PS
SM-PS3	BRIAN'S DINER PS
SM-PS4	SENECA FOODS PS



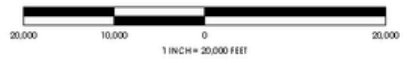
SM - VILLAGE OF MT. MORRIS TREATMENT

SL - LAKEVILLE TREATMENT PLANT

SD - GROVELAND STATION

LEGEND	
	EXISTING SANITARY SEWER MAIN
	EXISTING WASTEWATER TREATMENT PLANT
	EXISTING WASTEWATER PUMP STATION

LIVINGSTON COUNTY
WATER AND SEWER AUTHORITY
SEWER SYSTEM
LIVINGSTON COUNTY, NEW YORK



**LIVINGSTON COUNTY WATER & SEWER AUTHORITY
LIVINGSTON COUNTY, NEW YORK**

STATEMENT OF NET POSITION

December 31, 2024

<u>ASSETS AND DEFERRED OUTFLOWS OF RESOURCES:</u>	<u>2024</u>
<u>Current Assets -</u>	
Cash and cash equivalents	\$ 1,769,516
Accounts receivable (net of allowance)	1,372,807
Current portion of capital contributions receivable	67,252
Materials and supplies inventory	47,406
Prepaid items	223,503
Funds held for others	1,441
Total Current Assets	<u>\$ 3,481,925</u>
<u>Noncurrent Assets -</u>	
Restricted cash	\$ 12,205
Funds held by trustee	516,434
Capital contributions receivable, net of current portion	177,500
Total Noncurrent Assets	<u>\$ 706,139</u>
<u>Capital Assets -</u>	
Land and work in progress	\$ 2,411,254
Capital assets, net of depreciation	41,683,635
Lease assets, net of amortization	166,336
Total Capital Assets, Net	<u>\$ 44,261,225</u>
TOTAL ASSETS	<u>\$ 48,449,289</u>
<u>Deferred Outflows of Resources -</u>	
Deferred outflows of resources	<u>\$ 943,707</u>
<u>LIABILITIES, DEFERRED INFLOW OF RESOURCES AND NET POSITION:</u>	
<u>Current Liabilities -</u>	
Accounts payable	\$ 383,940
Accrued liabilities	53,136
Accrued interest	17,787
Funds held for others	20,048
Bond anticipation note	3,421,189
Current portion of debt	519,601
Total Current Liabilities	<u>\$ 4,415,701</u>
<u>Noncurrent Liabilities -</u>	
Bonds payable, net of current portion	\$ 11,092,378
Lease liability, net of current portion	115,039
Net pension liability	532,073
Compensated absences	47,743
OPEB liability	1,916,411
Total Noncurrent Liabilities	<u>\$ 13,703,644</u>
TOTAL LIABILITIES	<u>\$ 18,119,345</u>
<u>Deferred Inflows of Resources -</u>	
Deferred inflows of resources	<u>\$ 677,415</u>
<u>Net Position -</u>	
Net investment in capital assets	\$ 29,176,361
Restricted	528,639
Unrestricted net position	891,236
Total Net Position	<u>\$ 30,596,236</u>

**LIVINGSTON COUNTY WATER & SEWER AUTHORITY
LIVINGSTON COUNTY, NEW YORK**

**STATEMENT OF REVENUES, EXPENSES AND CHANGES
IN NET POSITION**

For Year Ended December 31, 2024

<u>OPERATING REVENUES:</u>	<u>2024</u>
Service fees	\$ 4,979,588
Operation and maintenance service fees	23,230
Permit fees	126,410
Other operating income	92,075
TOTAL OPERATING REVENUES	<u>\$ 5,221,303</u>
<u>OPERATING EXPENSES:</u>	
Wages, salaries, and benefits	\$ 2,205,019
Professional services	353,140
Utilities	409,482
Vehicle expense	59,240
Purchased water and sewer	783,019
Equipment maintenance	56,077
Building maintenance	682,972
Other	157,735
Depreciation and amortization	1,566,517
TOTAL OPERATING EXPENSES	<u>\$ 6,273,201</u>
OPERATING (LOSS) INCOME	<u>\$ (1,051,898)</u>
<u>NONOPERATING REVENUES (EXPENSES):</u>	
Interest earnings	\$ 120,155
Interest expense	(88,256)
Debt fees	(81,804)
Grant revenue	365,785
TOTAL NONOPERATING REVENUES (EXPENSES)	<u>\$ 315,880</u>
(DECREASE) INCREASE IN NET POSITION	<u>\$ (736,018)</u>
NET POSITION - BEGINNING OF YEAR	<u>31,332,254</u>
NET POSITION - END OF YEAR	<u>\$ 30,596,236</u>

**LIVINGSTON COUNTY WATER & SEWER AUTHORITY
LIVINGSTON COUNTY, NEW YORK**

STATEMENT OF CASH FLOWS

For Year Ended December 31, 2024

<u>CASH FLOWS FROM OPERATING ACTIVITIES:</u>	<u>2024</u>
Revenues -	
Receipts from service fees	\$ 5,230,669
Receipts from permit fees	126,410
Service fees collected for other governments	753,111
Other operating receipts	92,075
Expenses -	
Payments to vendors and suppliers for goods and services	(2,611,830)
Payments to employees for wages and benefits	(2,076,820)
Service fees remitted to other governments	(732,585)
Net Cash Provided by Operating Activities	<u>\$ 781,030</u>
<u>CASH FLOWS FROM CAPITAL AND RELATED FINANCING ACTIVITIES:</u>	
Purchases of capital assets	\$ (17,424)
Cash received for capital contributions	41,471
Grants received for capital assets	415,785
Proceeds from bond anticipation note payable	(1,661,250)
Repayments on bond payable	(416,805)
Interest on capital debt	(104,225)
Bond issuance cost	(81,804)
Lease principal payments	(35,980)
Net Cash Used In Capital and Related Financing Activities	<u>\$ (1,860,232)</u>
<u>CASH FLOWS FROM INVESTING ACTIVITIES:</u>	
Interest income	\$ 102,543
Net Cash Provided By Investing Activities	<u>\$ 102,543</u>
Net (Decrease) Increase in Cash and Cash Equivalents	\$ (976,659)
Cash and Cash Equivalents - Beginning of Year	<u>2,758,380</u>
Cash and Cash Equivalents - End of Year	<u>\$ 1,781,721</u>
Classified as:	
Cash and cash equivalents	\$ 1,769,516
Restricted cash and cash equivalents	12,205
Total cash and cash equivalents	<u>\$ 1,781,721</u>
<u>RECONCILIATION OF CHANGE IN NET POSITION TO NET CASH PROVIDED BY OPERATING ACTIVITIES:</u>	
Operating (loss) income	\$ (1,051,898)
Adjustments to reconcile changes in net position to cash Provided by Activities -	
Depreciation	1,566,517
Changes in assets and liabilities -	
Accounts receivable	227,851
Funds held by others	20,526
Inventory	(47,406)
Prepaid expense	(40,579)
Accounts payable	(62,759)
Compensated absences	(4,547)
Net pension asset/(liability)	(54,191)
Other postemployment benefit	184,426
Deferred inflows	105,348
Deferred outflows	(66,090)
Other current liabilities	3,832
Net Cash Provided by Operating Activities	<u>\$ 781,030</u>

Management's Assessment of Internal Controls

The Authority has developed policies and procedures to provide reasonable assurance that assets are safeguarded from unauthorized acquisitions, use of, or disposition of assets that could have a material effect on the Authority's operations, financial statements and reports, and that the records of the Authority reflect only authorized transactions.

The Authority's system of internal controls is evaluated regularly by Authority management and administrative staff. Independent external auditors also review the internal control system of the Authority in order to determine compliance with generally accepted accounting principles and safeguards for the purpose of expressing an opinion on the financial statements.

This statement verifies that management has documented and assessed the internal control structure and procedures of the Livingston County Water & Sewer Authority for the year ending December 31, 2024. This assessment found the Authority's internal controls to be adequate, and to the extent that deficiencies were identified, the Authority has developed corrective action plans to reduce any corresponding risk.

Person & Real Property Transactions

In 2024, the Authority disposed of the following personal property (equipment, vehicles, and materials) with an estimated fair market value in excess of \$5,000:

- 2017 Ferris IS21000Z Zero Turn Mower; VIN#: 2017904119

In 2024, the Authority did not acquire or dispose of real property with a fair market value in excess of \$15,000.

DEBT SCHEDULE

For Year Ended December 31, 2024

IX. Short-Term Debt

A. Bond Anticipation Notes

1. On November 4, 2021, the Authority issued a Bond Anticipation Note (BAN) through the Environmental Facilities Corporation (EFC) for a maximum amount of \$4,000,000 for the Water System Improvements Project. This BAN includes an interest free sum of \$1,333,333 and a market rate sum of \$2,666,667 at a market rate of 0.33% under a NYS EFC sort-term financing program, which is considered a direct borrowing. The BAN has a maturity date of November 4, 2026. At this time, the Authority can convert the BAN to long-term financing if all conditions are met and if such financing is made available by EFC. The Authority drew down \$1,615,438 on this BAN in 2022, \$1,452,900 in 2023, and \$388,851 in 2024. In addition, the first short-term principal payment of \$36,000 was made.
2. The Authority authorized up to \$1,705,000 System Revenue Notes, 2023 and System Revenue Bonds, 2023 to finance the installation of a new UV disinfection system at Groveland Wastewater Treatment Plant financing the construction of a new chemical feed system at the Lakeville Wastewater Treatment Plant. The System Revenue Notes in the amount of \$1,540,000 matured on August 8, 2024, and \$1,245,000 was permanently financed.

The following is a summary of the changes in short-term debt as of December 31, 2024:

	<u>Original Amount</u>	<u>Maturity</u>	<u>Interest Rate</u>	<u>Balance 1/1/24</u>	<u>Additions</u>	<u>Deletions</u>	<u>Balance 12/31/24</u>
RAN-2023	\$ 1,540,000	8/8/2024	4.50%	\$ 1,540,000	\$ -	\$ (1,540,000)	\$ -
BAN-2021	\$ 1,615,438	11/4/2026	0.33%	3,068,338	388,851	(36,000)	3,421,189
Total Short-Term Debt				<u>\$ 4,608,338</u>	<u>\$ 388,851</u>	<u>\$ (1,576,000)</u>	<u>\$ 3,421,189</u>

X. Long-Term Debt

A. EFC Revenue Bond Payable

1. On August 27, 2009, the Authority issued a \$2,921,000 Sewer Installment Bond with the NYS Environmental Facilities Corporation to fund the cost of various sewer projects. The bond has an interest rate of 4.27% and will mature on August 1, 2039.
2. On February 7, 2011, the Authority issued a \$951,750 Drinking Water Installment Bond with the NYS Environmental Facilities Corporation to fund the cost of the Groveland Station water project. The Bond has an interest rate of 0% and will mature on August 31, 2040.
3. On May 1, 2012, the Authority was a part of a \$1,322,692 offering of the NYS EFC Revenue Bonds to fund the cost of various sewer projects. The bond has an interest rate of 3.74% and will mature on May 1, 2042.
4. As of December 31, 2022, the Authority owed \$6,686,416 on the EFC BAN which funded the Lakeville Wastewater Treatment Plant upgrades. The balance was subsequently refinanced on a long-term basis. The long-term debt was issued on January 5, 2023 and is a \$7,652,105 Clean Water Installment Bond with NYS Environmental Facilities Corporation. The bond has an interest rate of 0% and will mature on January 5, 2052.
5. The \$1,705,000 System Revenue Notes were permanently financed on August 7, 2024 through the issuance of a \$1,245,000 Bond. The bond has a maturity date of August 1, 2039.

Real Property Schedule

YEAR ENDING DECEMBER 31, 2024

What	Where	Code	Address	Tax ID	Acreage
Sewer Plant	Lakeville		1997 D'Angelo Dr	65.-1-84.1	18.56 acres
Sewer Plant	Groveland	853	7458 Groveland Station Rd	135.-1-25.2	57 x 259
Water Tank	Groveland	822	7305 Groveland Hill Rd	136.-1-3	75 x 75
Water Tank	Groveland	822	7161 Groveland Hill Rd	127.-1-20	75 x 75
Water Tank	Conesus	827	6022 Sliker Hill	119.-1-20.12	280 x 170
Water Pump Station	Groveland	242	5500 Maple Beach	109.-1-38.12	.26 acre
Water Pump Station	Groveland	105	5168 Dennison Rd	118.-1-10.2	1.80 acres
Sewer Pump Station	Livonia	853	2851 Lakeville Rd	65.-1-6.113	30 x 60
Sewer Pump Station	Groveland	312	5650 S Cove Ln	1W 110.69-1-9	30x40
Sewer Pump Station	Groveland	853	6019 W Lake Rd	2W 109.60-1-7	30 x 60
Sewer Pump Station	Groveland	853	5945 Calvin Lane	3W 109.52-1-7	50 x 16
Sewer Pump Station	Groveland	853	5883 W Lake Rd	4W 109.44-1-13.2	25 x 50
Sewer Pump Station	Groveland	853	4257 Sutton Point North	5W 100.83-1-32	30 x 80
Sewer Pump Station	Groveland	853	5556 Cottonwood Dr	6W 100.59-1-11.2	66 x 33
Sewer Pump Station	Groveland	853	5341 West Lake Rd	7W 100.35-1-13	55 x 30
Sewer Pump Station	Geneseo	853	5113 West Lake Rd	8W 91.68-1-17	39 x 33
Sewer Pump Station	Geneseo	853	5346 N Point Dr	9W 91.36-1-20	33 x 33
Sewer Pump Station	Geneseo	853	4637 Westwood Dr	10W 82.76-1-9	47 x 44
Sewer Pump Station	Geneseo	853	4257 West Lake Rd	12W 83.37-1-16.2	35 x 63
Sewer Pump Station	Livonia	853	4007 Graywood Ctr	13W 74.69-1-3	31 x 30
Sewer Pump Station	Livonia		3876 Grayshores Rd	14W no tax ID	
Sewer Pump Station	Conesus	311	5756 Mariners Dr	1E 110.55-1-60	35 x 42
Sewer Pump Station	Conesus	311	5926 E Lake Rd	2E 110.39-1-12.1	30 x 27
Sewer Pump Station	Conesus	311	5650 E Lake Rd	3E 101.-1-96.3	30 x 25
Sewer Pump Station	Conesus	311	5506 E Lake Rd	4E 101.46-1-8	7 x 31
Sewer Pump Station	Conesus	853	5289 E Lake Rd	5E 92.78-1-17	35 x 35
Sewer Pump Station	Livonia	853	5158 E Lake Rd	6E 92.62-2-2	50 x 24
Sewer Pump Station	Livonia	311	5765 McPherson's Pt	7E 92.38-2-13	41 x 42
Sewer Pump Station	Livonia	853	4820 E Lake Rd	8E 83.79-2-1.2	33 x 25
Sewer Pump Station	Livonia	853	5719 Old Orchard Pt	9E 83.54-2-28	25 x 45
Sewer Pump Station	Livonia	853	4440 E Lake Rd	10E 83.31-2-13	48 x 12
Sewer Pump Station	Livonia	853	4088 E Lake Rd	11E 74.48-1-7.2	33 x 32
Sewer Pump Station	Lakeville	853	3562 Camp Run	12E 65.81-1-36	10 x 50
Sewer Pump Station	Mt Morris	330	3098 Mt Morris -Geneseo Rd	106.-1-16.2	73 x 150
Sewer Pump Station	Mt Morris	822	3229 Mt Morris - Geneseo Rd	98.-2-1.12	329 x 138
Sewer Pump Station	Groveland	312	7546 Groveland Station Rd	136.17-1-11.2	40 x 60
Sewer Pump Station	Conesus	311	6170 East Lake Rd	110.-1-20.117	40 x 40
Sewer Pump Station	Conesus	652	6265 Mill Street	110.-1-16.123	32 x 59
Sewer Pump Station	Conesus	600	6295 North Street	111.17-1-11.2	50 x 50
Sewer Pump Station	Conesus		6042 South Livonia Rd	111.-1-76.2	
Driveway	Livonia	853	Longview Blvd.	74.-1-5.215	50 x 680

105	Agricultural Vacant Land
311	Residential Vacant Land
312	Residential Land incl Small Improvement
330	Vacant Land located in Commerical Areas
600	Community Services
652	Office building
822	Water Supply
827	Water Transmission - Outside Plant
853	Sewage Treatment and Water Pollution Control



Livingston County Water & Sewer Authority

1997 D'Angelo Drive

P.O. Box 396

Lakeville, NY 14480

Phone: (585) 346-3523

Fax: (585) 346-0954

www.lcwsa.us